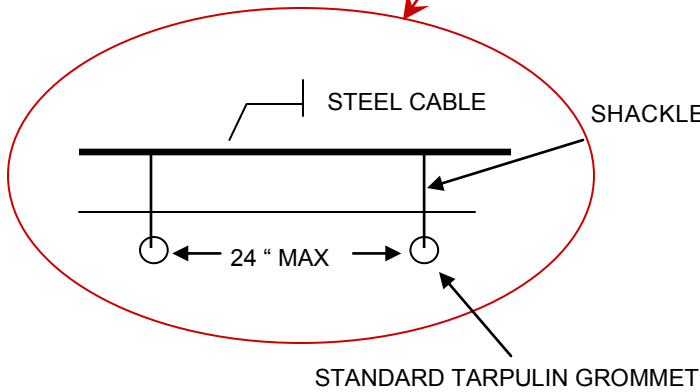
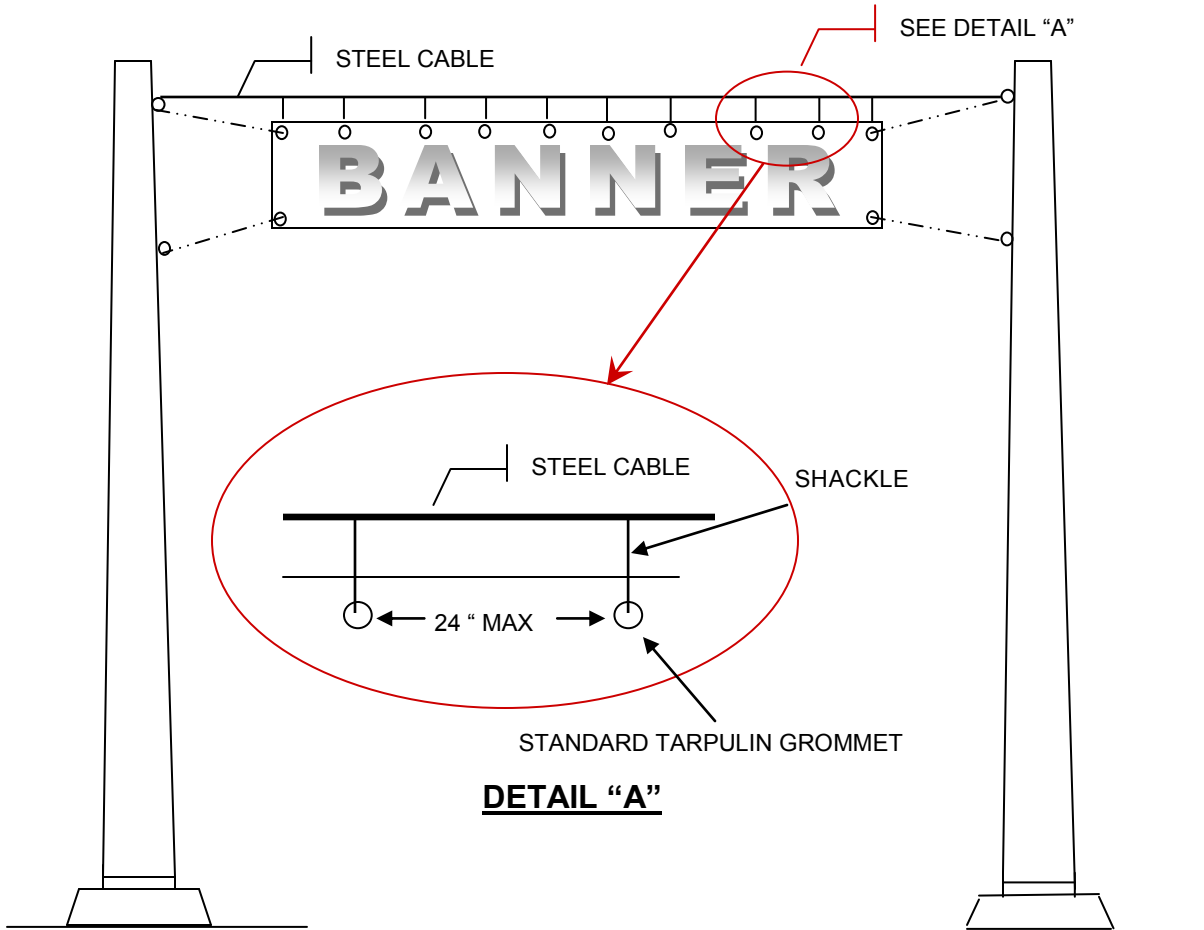


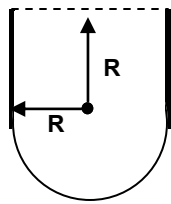
APPENDIX II

BANNER SPECIFICATIONS



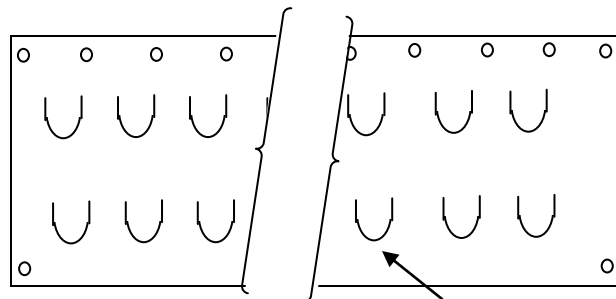
DETAIL "A"

GROMMETS AT ALL FOUR CORNERS—24" MAX SPACING BETWEEN GROMMETS ACROSS TOP OF BANNER



A = AREA OF FLAP
 R = RADIUS AT HOLE
 $A = 3.57 R^2$

TYPICAL WIND VENT FLAP



BANNER DETAIL

WIND VENT FLAPS AS REQUIRED

NOTES:

1. MAXIMUM EFFECTIVE SURFACE AREA OF BANNER — 44 SQUARE FEET. (WHERE EFFECTIVE SURFACE AREA = ACTUAL SURFACE AREA MINUS TOTAL AREA OF WIND VENT FLAPS PROVIDED.)
2. APPLICANT TO SUPPLY PLAN SHOWING DIMENSIONS OF BANNER LOCATION AND DIMENSIONS OF WIND VENT FLAPS AND GROMMETS FOR APPROVAL.
3. BANNER TO BE CONSTRUCTED OF VINYL OR OTHER STURDY MATERIAL RESISTANT TO STRETCHING OR TEARING.