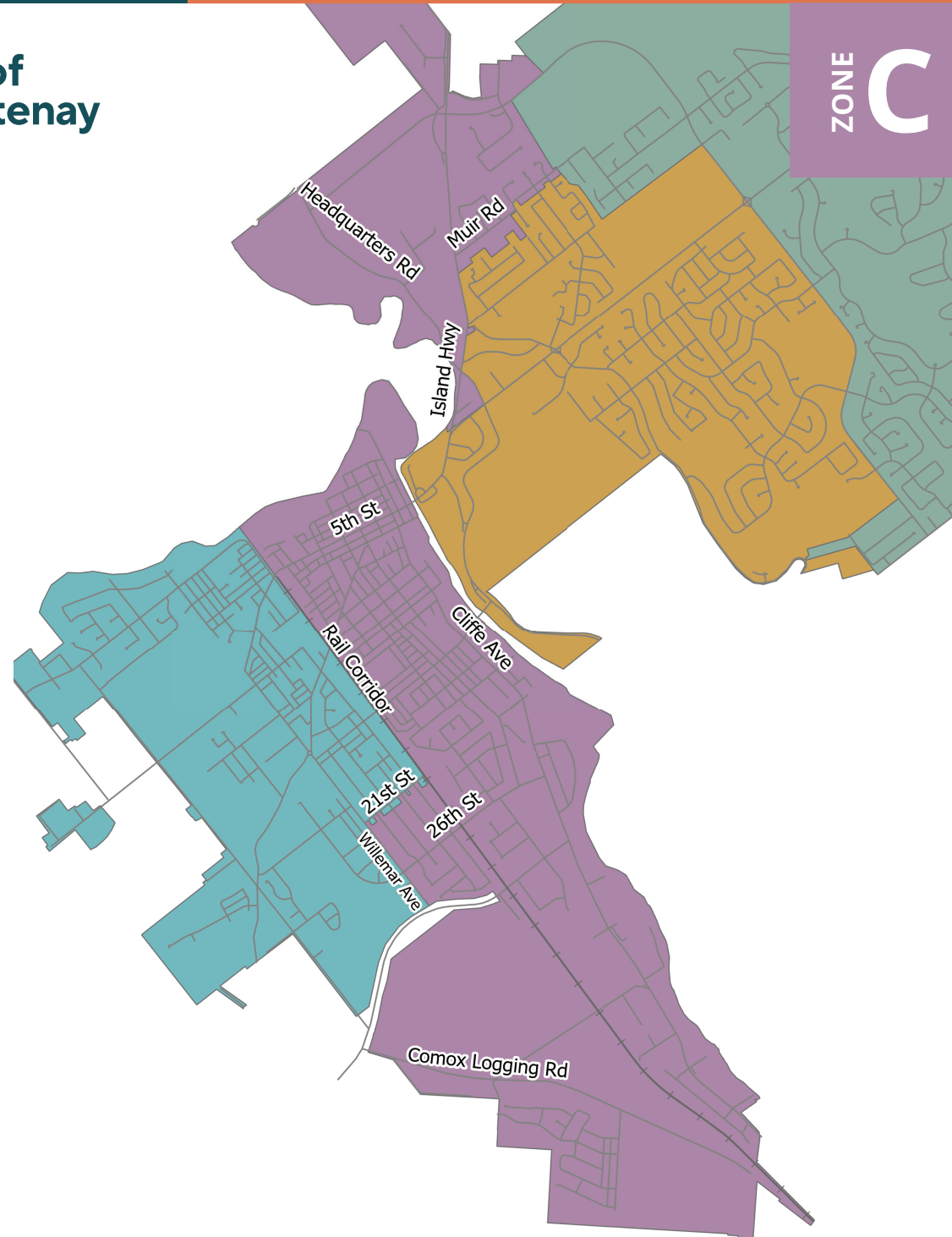


Your Collection Zone

Collection missed? Please call 250.338.1525



**City of
Courtenay**



ZONE **C**

Comox Valley Recycling Depots

Courtenay Return-it Depot

250.338.6013 • 493 Puntledge Road, Courtenay
Open Monday – Saturday • 9:00 a.m. – 5:00 p.m.
Closed on statutory holidays. www.return-it.ca

Comox Valley Waste Management Centre

250.334.6016 • 3699 Bevan Road, Cumberland
For facility status and operating hours visit
www.cswm.ca

What is Recycle BC?

Recycle BC is a not-for-profit organization responsible for residential packaging and paper recycling throughout British Columbia. Recycle BC ensures material collected from households and recycling depots is sorted, and responsibly managed and recycled. They provide recycling services either directly to communities, or by working in partnership with local governments, First Nations, private companies and other not-for-profit organizations. There are 196 communities who participate in recycling collection programs with Recycle BC, and even more are serviced by their recycling depots. Each year, over 200,000 tonnes of material is collected from households and depots.

The program is funded by businesses, like retailers, manufacturers and restaurants that supply recyclable material to BC residents.

**Get reminders right to
your smart phone!**

DOWNLOAD
THE FREE APP



Scan with phone camera to learn more at
courtenay.ca/collects

Residential Waste Collection Guide

January to December 2026

Organics • Recycling • Garbage

Schedule & Collection Zones

ZONE **C**



**City of
Courtenay**

1000 Piercy Avenue, Courtenay, BC • V9N 3E6
Tel 250.338.1525
Email operations@courtenay.ca

courtenay.ca/collects

Your Collection Schedule

Curbside Collection Sorting Guide

To Be Curbside By 8am



Organics & Garbage

Organics & Recycling

Statutory Holidays

JANUARY 2026						
S	M	T	W	T	F	S
				1	2	
5	6	7	8	9		
12	13	14	15	16		
19	20	21	22	23		
26	27	28	29	30		

FEBRUARY 2026						
S	M	T	W	T	F	S
	2	3	4	5	6	
	9	10	11	12	13	
16	17	18	19	20		
23	24	25	26	27		

MARCH 2026						
S	M	T	W	T	F	S
	2	3	4	5	6	
9	10	11	12	13		
16	17	18	19	20		
23	24	25	26	27		
30	31					

APRIL 2026						
S	M	T	W	T	F	S
		1	2	3		
6	7	8	9	10		
13	14	15	16	17		
20	21	22	23	24		
27	28	29	30			

MAY 2026						
S	M	T	W	T	F	S
					1	
4	5	6	7	8		
11	12	13	14	15		
18	19	20	21	22		
25	26	27	28	29		

JUNE 2026						
S	M	T	W	T	F	S
	1	2	3	4	5	
8	9	10	11	12		
15	16	17	18	19		
22	23	24	25	26		
29	30					

JULY 2026						
S	M	T	W	T	F	S
		1	2	3		
6	7	8	9	10		
13	14	15	16	17		
20	21	22	23	24		
27	28	29	30	31		

AUGUST 2026						
S	M	T	W	T	F	S
3	4	5	6	7		
10	11	12	13	14		
17	18	19	20	21		
24	25	26	27	28		
31						

SEPTEMBER 2026						
S	M	T	W	T	F	S
	1	2	3	4		
7	8	9	10	11		
14	15	16	17	18		
21	22	23	24	25		
28	29	30				

OCTOBER 2026						
S	M	T	W	T	F	S
				1	2	
5	6	7	8	9		
12	13	14	15	16		
19	20	21	22	23		
26	27	28	29	30		

NOVEMBER 2026						
S	M	T	W	T	F	S
	2	3	4	5	6	
9	10	11	12	13		
16	17	18	19	20		
23	24	25	26	27		
30						

DECEMBER 2026						
S	M	T	W	T	F	S
	1	2	3	4		
7	8	9	10	11		
14	15	16	17	18		
21	22	23	24	25		
28	29	30	31			

Organics

Acceptable:

- ✓ Leaves
- ✓ Grass clippings
- ✓ Flowers
- ✓ Plants
- ✓ Tree or hedge prunings
- ✓ Small branches up to 3"
- ✓ Food waste (fruit/veggies, eggshells, meat/bones, soiled napkins)
- ✓ Tea bags, coffee grounds & filters
- ✓ Food-soiled paper towels & containers made of cardboard



Not Acceptable:

- ✗ Biodegradable/compostable plastics
- ✗ Animal feces
- ✗ Rocks or stumps
- ✗ Large amounts of dirt/soil
- ✗ Large amounts of sod



Garbage

- ✓ Items can be placed, bagged or loose, in the cart.
- ✓ Please bag any personal hygiene waste.
- ✓ Diapers
- ✓ Plastic Squeeze Tubes
- ✓ Pet Waste - including cat litter



Recycling

Note: Place mixed materials loose in cart. Rinse and flatten before placing in cart. Do not bag items.

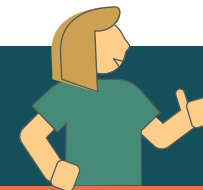
Acceptable:

- ✓ Newspapers, inserts, flyers
- ✓ Magazines, catalogues, phone books
- ✓ Boxboard boxes
- ✓ Paper egg cartons
- ✓ Paper bags
- ✓ Cartons of milk, soup, etc.
- ✓ Envelopes
- ✓ Household paper
- ✓ Cardboard boxes (max 90cm x 90cm)
- ✓ Shredded paper (contain in cardboard box, e.g. shoe box, cereal box)
- ✓ Plastic or paper take-out cups, bowls & lids
- ✓ Plastic bottles, jars & jugs
- ✓ Plastic trays & clamshells
- ✓ Plastic garden pots & seedling trays
- ✓ Metal, cans, foil wrap & take-out containers
- ✓ Caps, tops, lids & pumps
- ✓ Aerosol cans (empty)

Not Acceptable:

- ✗ Glass
- ✗ Foam packaging
- ✗ Overwrap
- ✗ Plastic bags
- ✗ Flexible plastics

Items that are not acceptable curbside can be taken to the **Recycle BC Depots**.



Missed collection - operations@courtenay.ca
 Damaged or misplaced carts or general questions regarding your solid waste service:
operations@courtenay.ca | Operational Services - 250.338.1525



When is Collection Day? Is this item recyclable? What goes in the Organics Cart?
Get all the answers. Download the Courtenay Collects App.

No smartphone? No problem! Online, phone and email alerts www.courtenay.ca/collects



No Hazardous Materials Accepted Curbside

Exclude batteries; medical sharps; bleach or aerosol containers with any contents remaining; containers with the words **COMBUSTIBLE**, **FLAMMABLE** or **VERY FLAMMABLE** on them (except cosmetic and beauty product containers); compressed gas cylinders, for example used propane cylinders; containers for paint, motor oil, vehicle lubricants, or antifreeze; or containers for pesticides with the words **DANGER**, **WARNING** or **POISON**, and precautionary octagon or diamond symbols with skull and cross bones.